

Institute on Lake Superior Geology

57th Annual Meeting

May 19-20, 2011

Ashland, Wisconsin

Hosted by Northland College



Students are encouraged to participate!

There will be presentations, poster sessions, a banquet, awards, and great field trips!
The meeting will be at the AmericInn in Ashland. For more information about the 2011 meeting,
go to www.lakesuperiorgeology.org, or contact tfitz@northland.edu

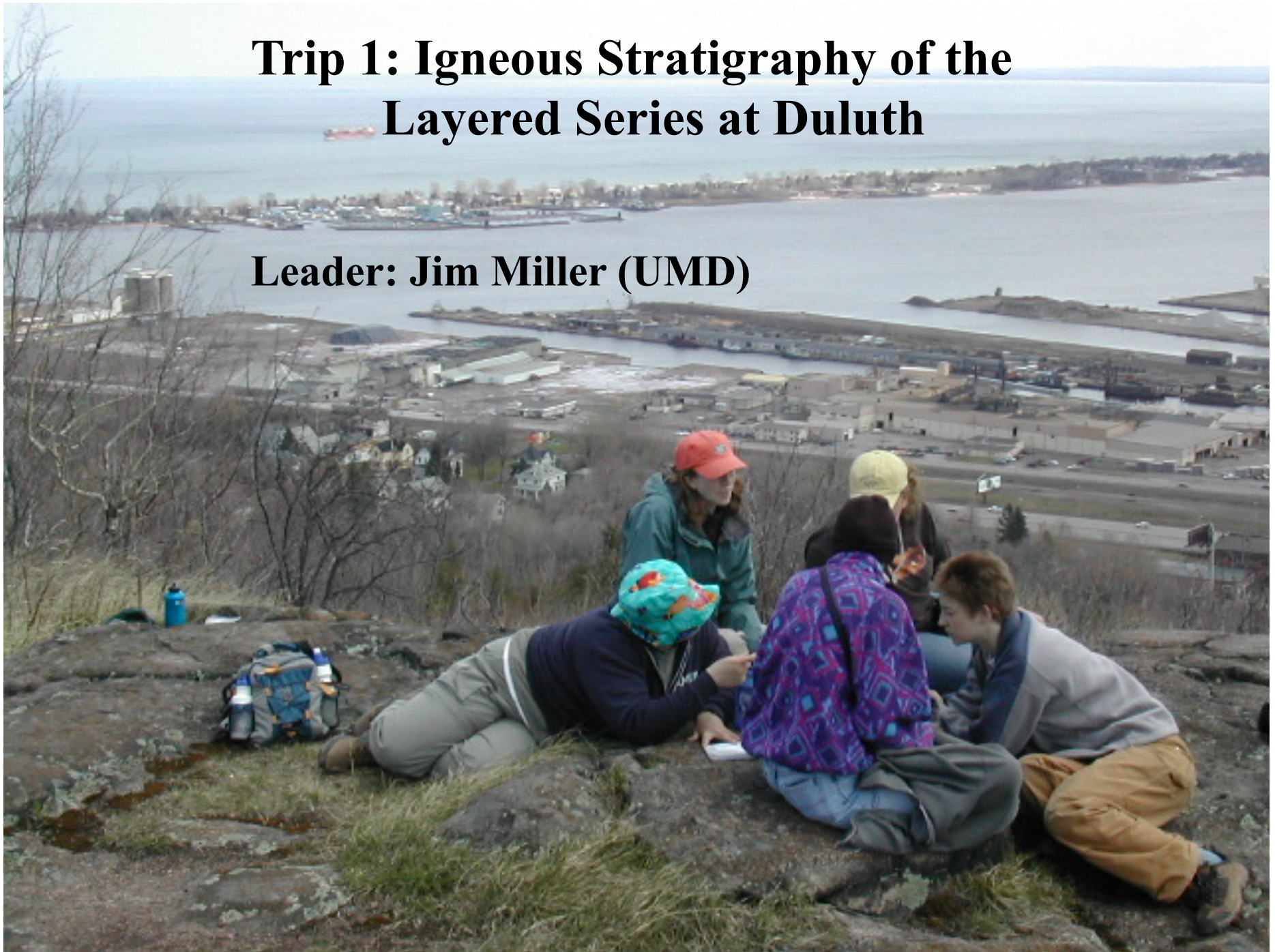
ILSG 2011 will be held at the AmericInn in Ashland



Wednesday May 18	Thursday May 19	Friday May 20	Saturday May 21
<u>All-Day</u> <u>Field Trips</u> 1) Duluth Layered 2) Midcont Microcosm 3) Bayfield Peninsula	<u>Morning</u> Technical Sessions	<u>Morning</u> Technical Sessions	<u>All-Day</u> <u>Field Trips</u> 7) Monocline 8) Unconform 9) Mellen
	<u>Afternoon</u> Technical Sessions	<u>Afternoon</u> <u>Field trips</u> 4) Ashland 5) Bad River 6) Copper Fall	
<u>Evening</u> Ice breaker	<u>Evening</u> Awards Banquet Keynote Speaker	<u>Evening</u> Barbeque at Northland	

Trip 1: Igneous Stratigraphy of the Layered Series at Duluth

Leader: Jim Miller (UMD)



A photograph of a rock face with stromatolites. The rock is dark grey and has several large, rounded, light-colored stromatolite structures. A hiker's boot is visible in the bottom left corner, and some green moss is growing on the rock. The text is overlaid on the top right of the image.

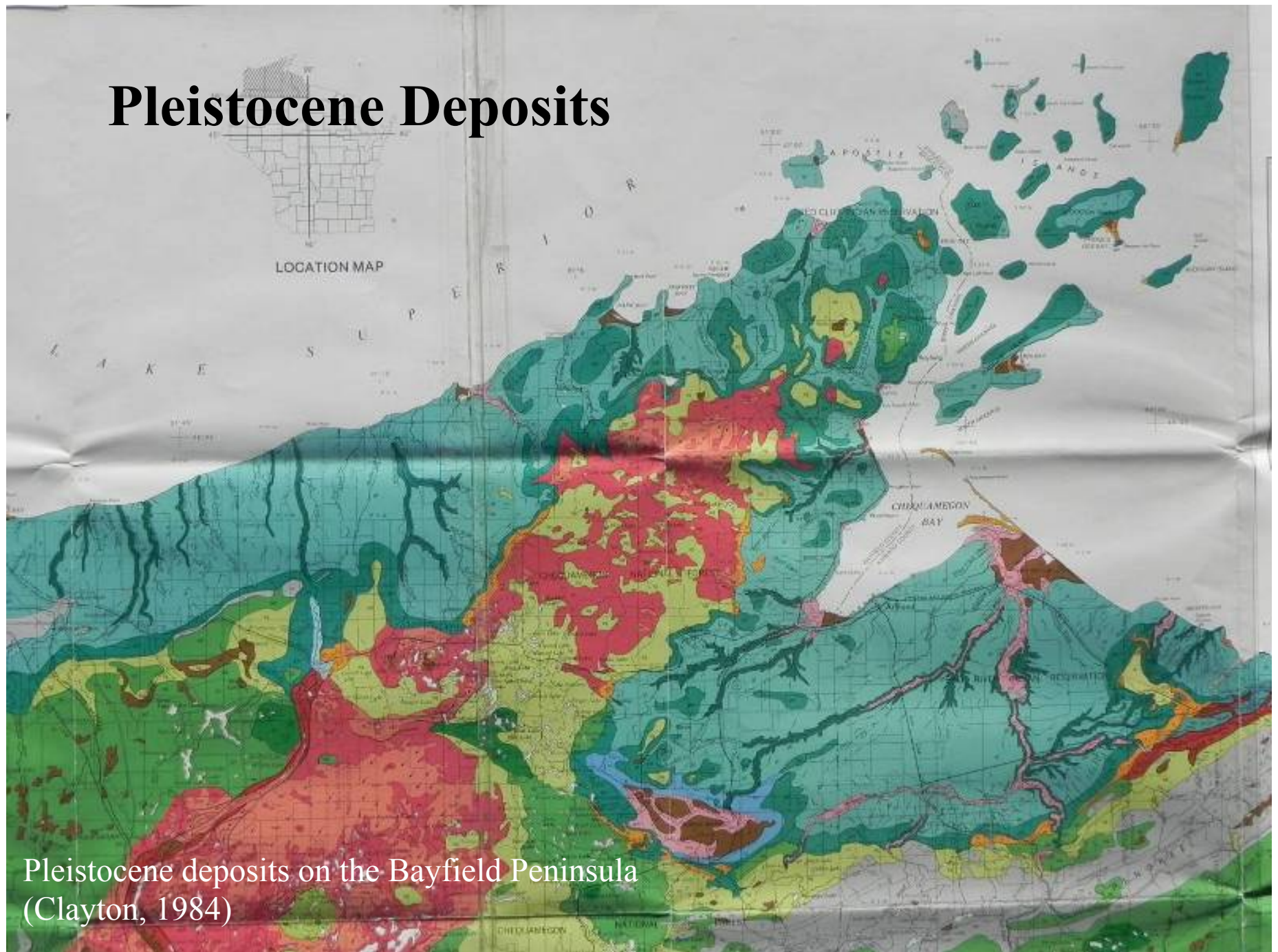
Trip 2: Midcontinent Microcosm

**Leaders: Marcia Bjornerud (Lawrence University)
and Bill Cannon (USGS)**

Stromatolites in the Bad River Formation

[illegible]

Pleistocene Deposits



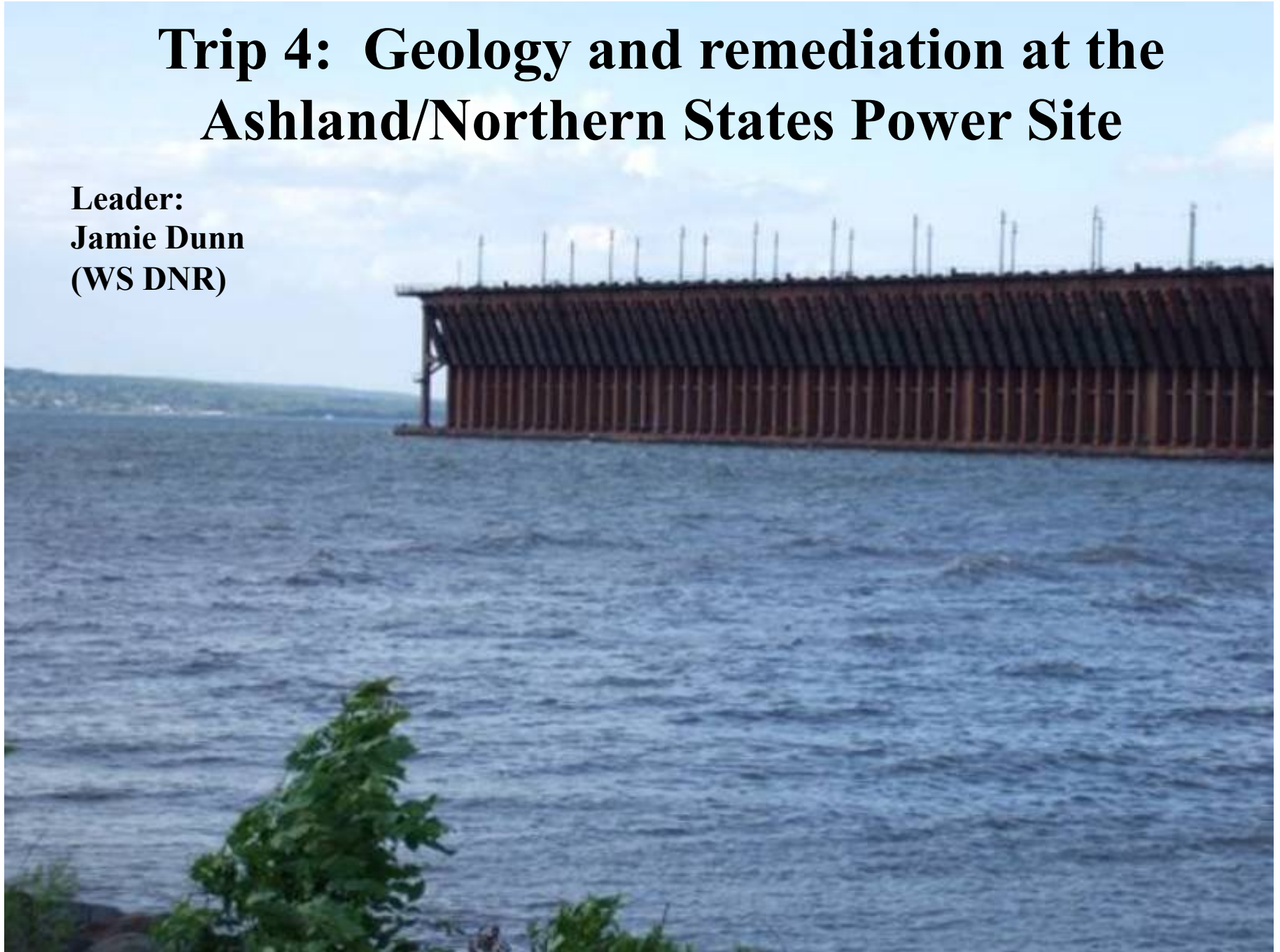
Pleistocene deposits on the Bayfield Peninsula
(Clayton, 1984)

Beautiful Pleistocene Mud !



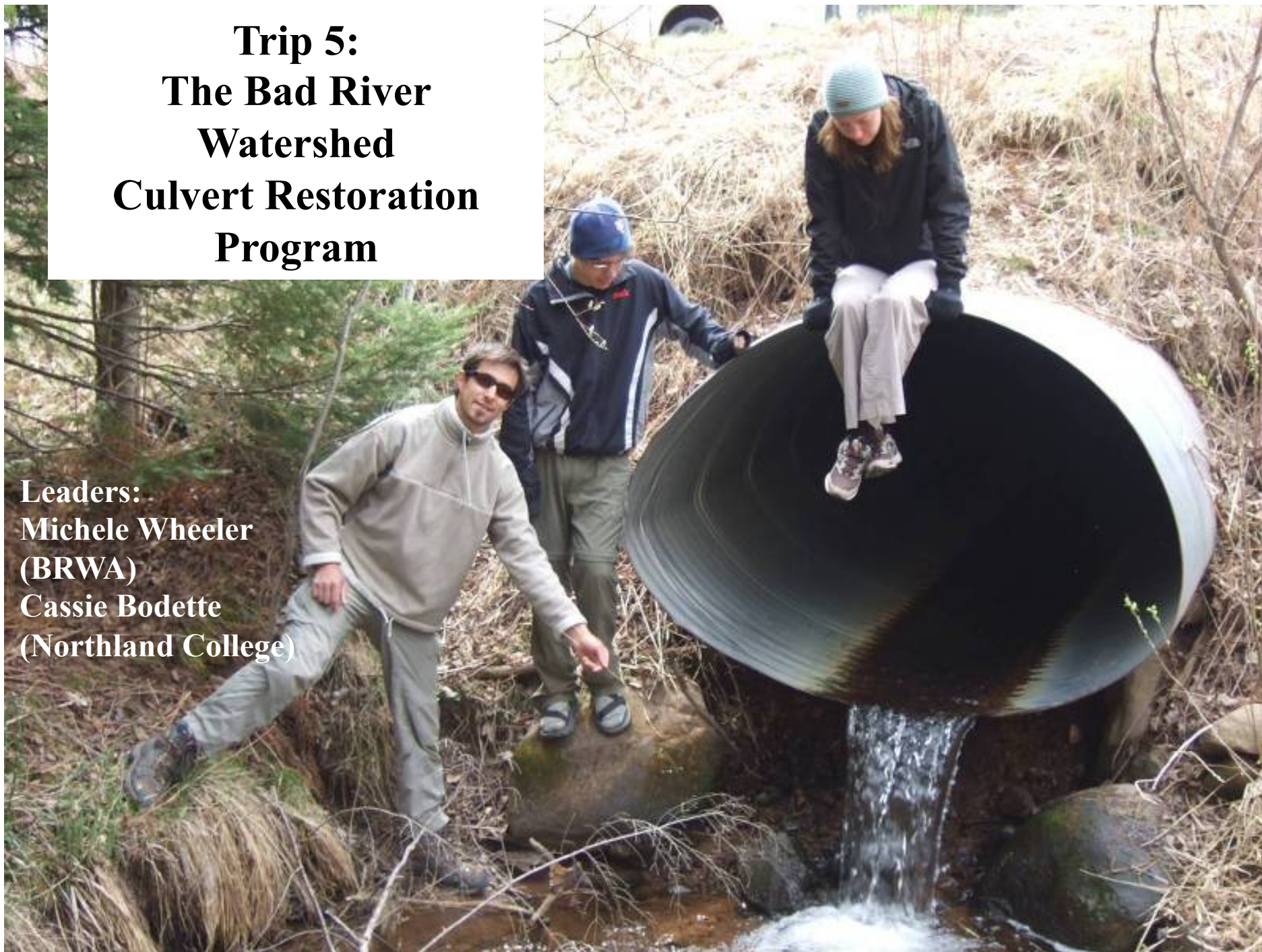
Trip 4: Geology and remediation at the Ashland/Northern States Power Site

**Leader:
Jamie Dunn
(WS DNR)**

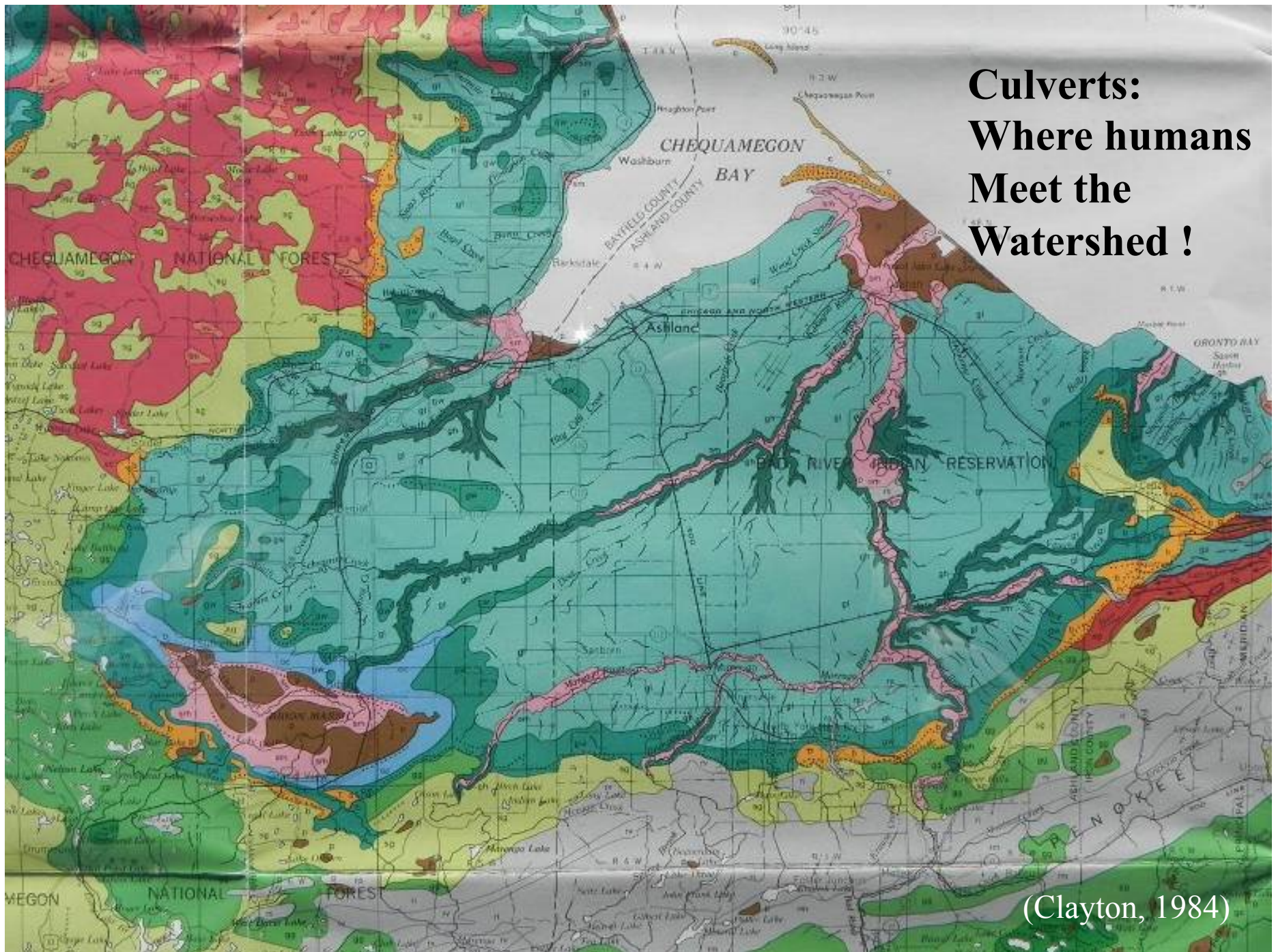


**Trip 5:
The Bad River
Watershed
Culvert Restoration
Program**

**Leaders:
Michele Wheeler
(BRWA)
Cassie Bodette
(Northland College)**



Culverts: Where humans Meet the Watershed !





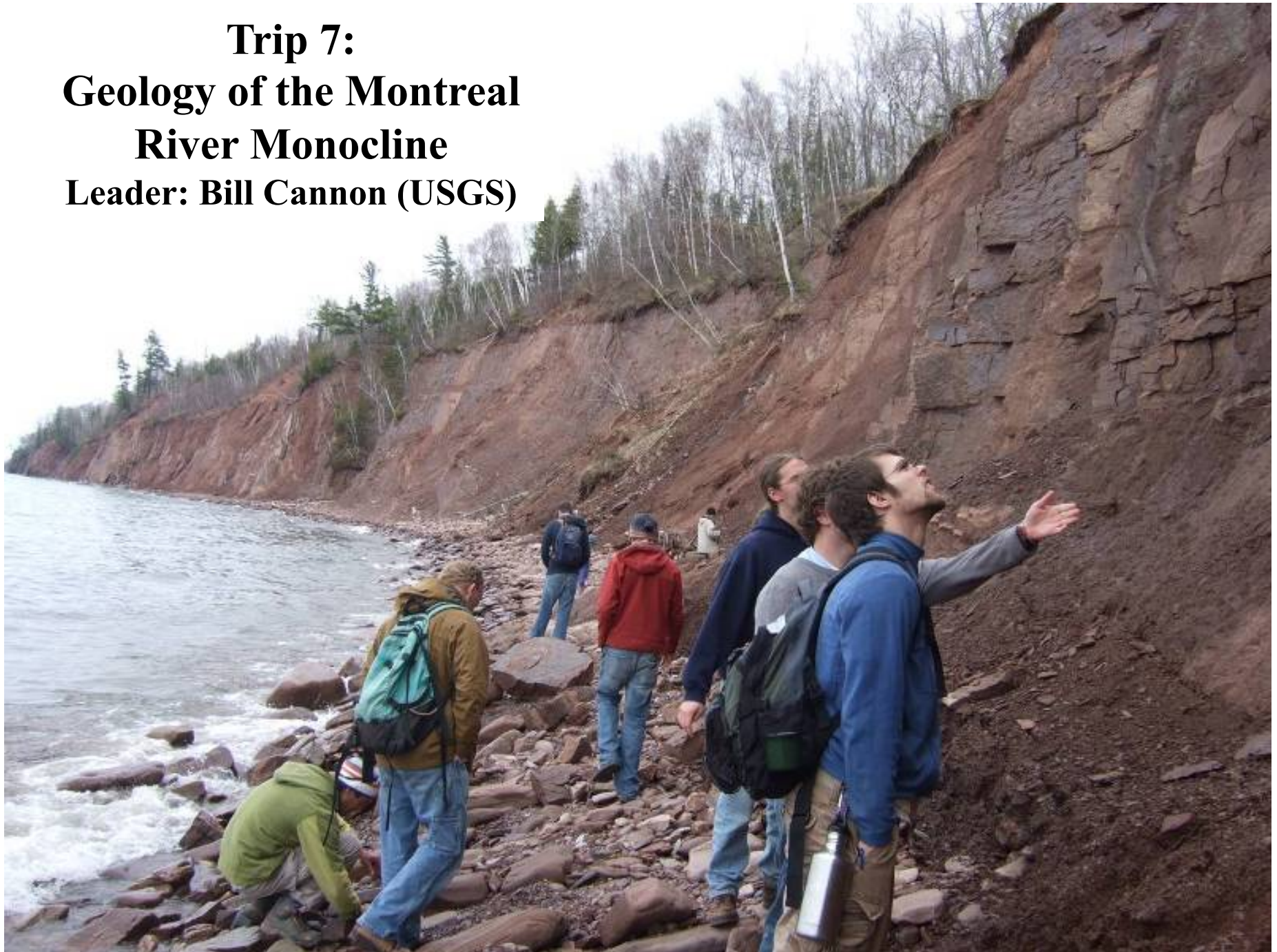
Trip 6: The Geology of Copper Falls State Park

Leaders:
Allison Mills
Drew Cramer
Tom Fitz
(Northland)

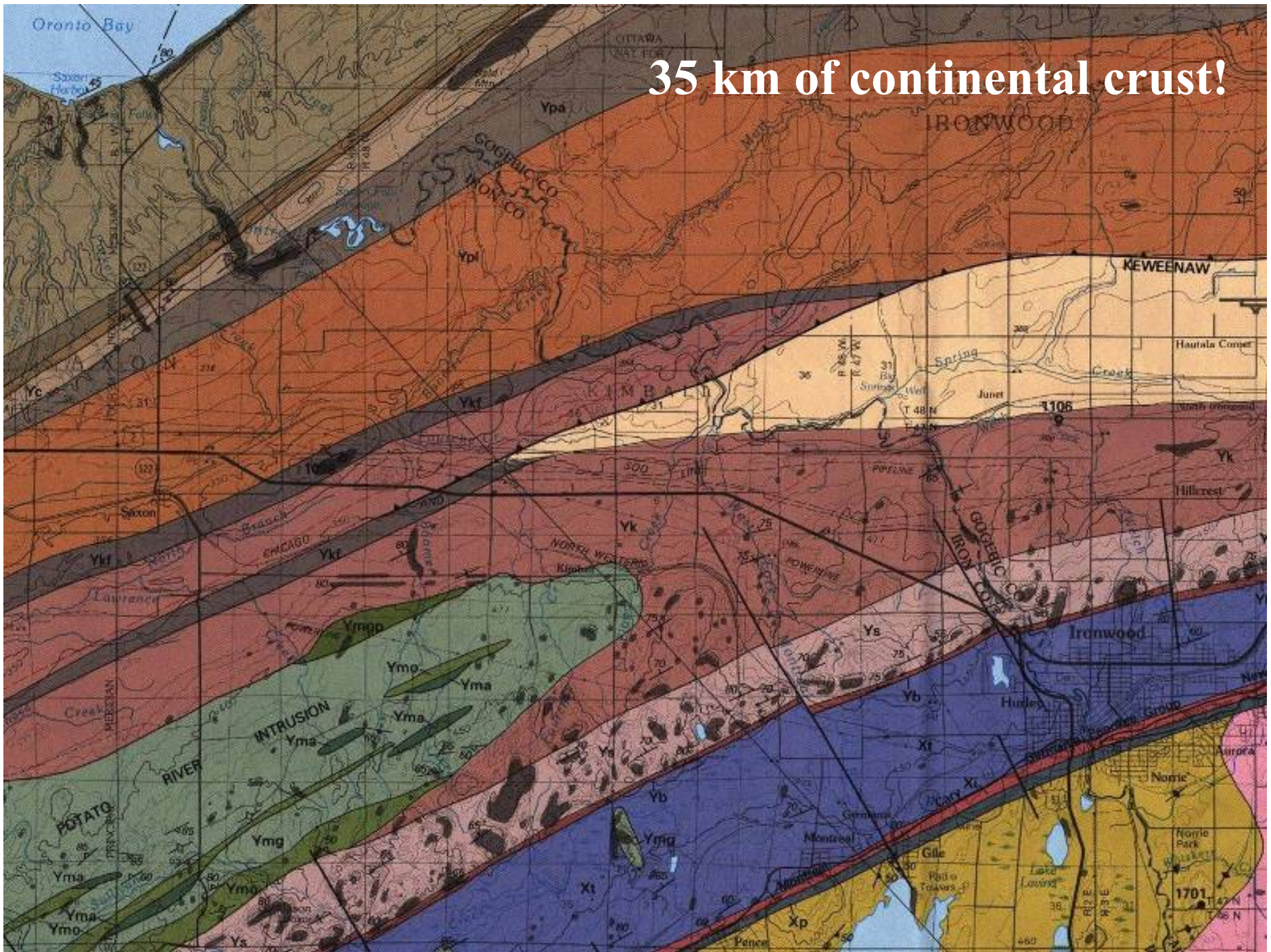
**Keweenaw Volcanic
Rocks in Copper Falls
Gorge**



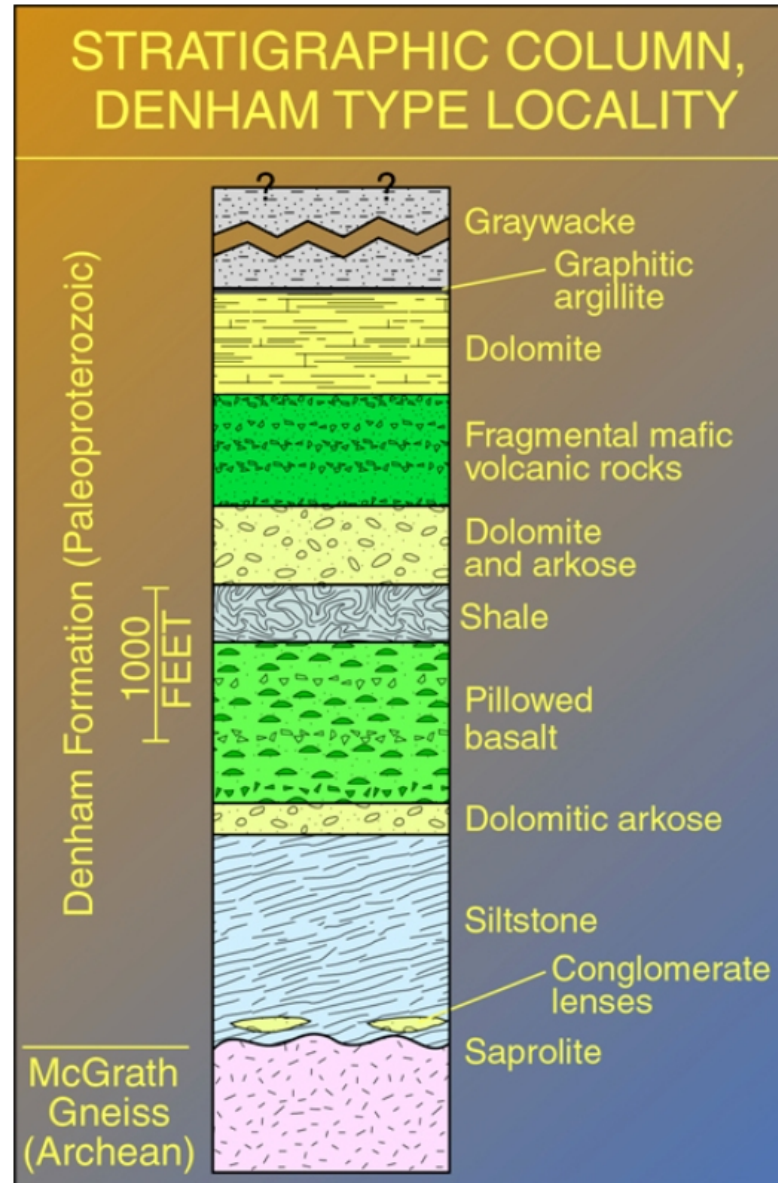
**Trip 7:
Geology of the Montreal
River Monocline
Leader: Bill Cannon (USGS)**



35 km of continental crust!



Trip 8: The Archean/Paleoproterozoic unconformity near Denham, Minnesota



**Leaders: Terry Boerboom
(MN Geol. Survey)
Dan Holm (Kent State)**

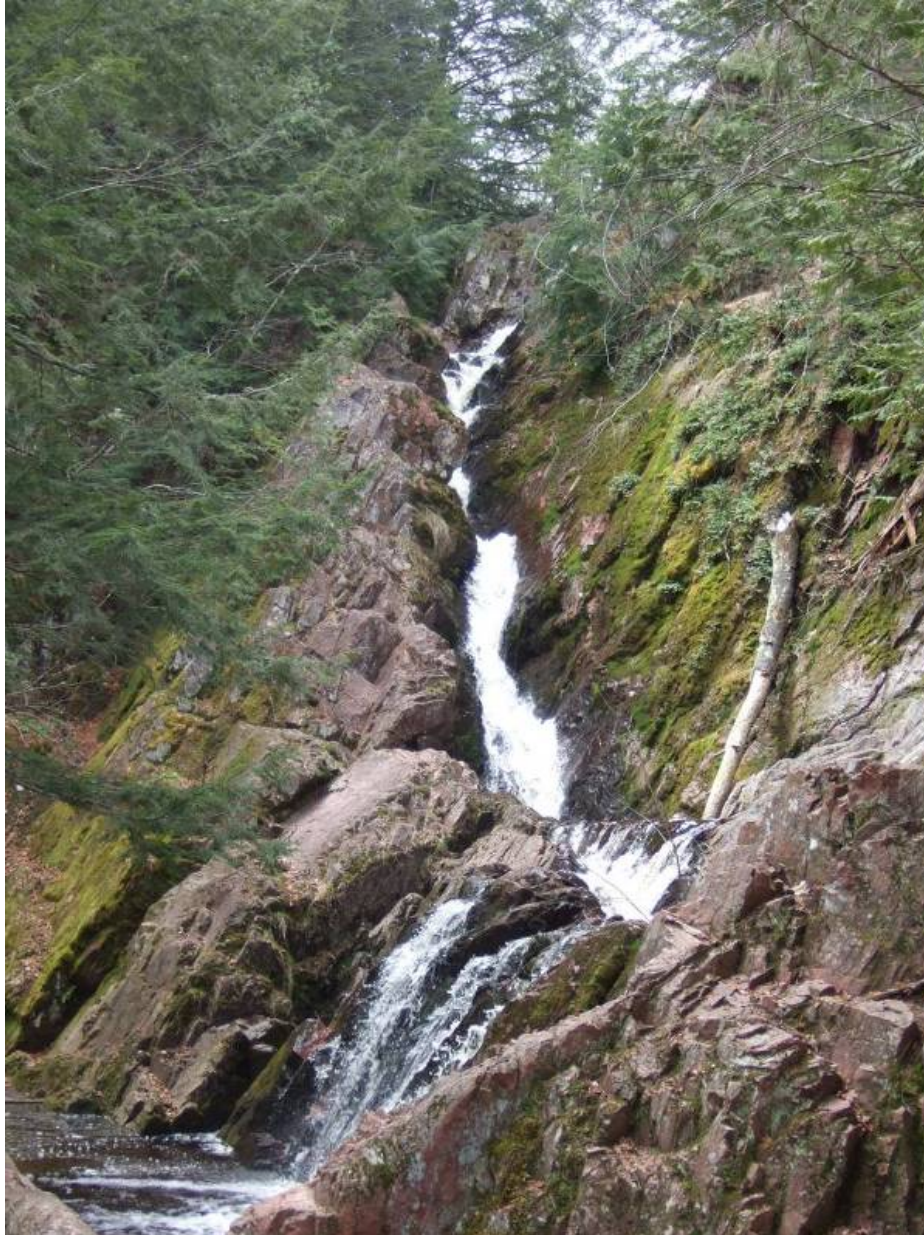
Terry Boerboom

Denham Basal Conglomerate



Photo by Terry Boerboom

Trip 9: Granitic, gabbroic, and ultramafic rocks of the Mellen Complex



**Leader:
Tom Fitz
(Northland College)**

Granophyre at
Morgan Falls

Intrusive breccia in the Mellen Complex



1100 Ma Rift as it happened



(Side of the van serves as white board)

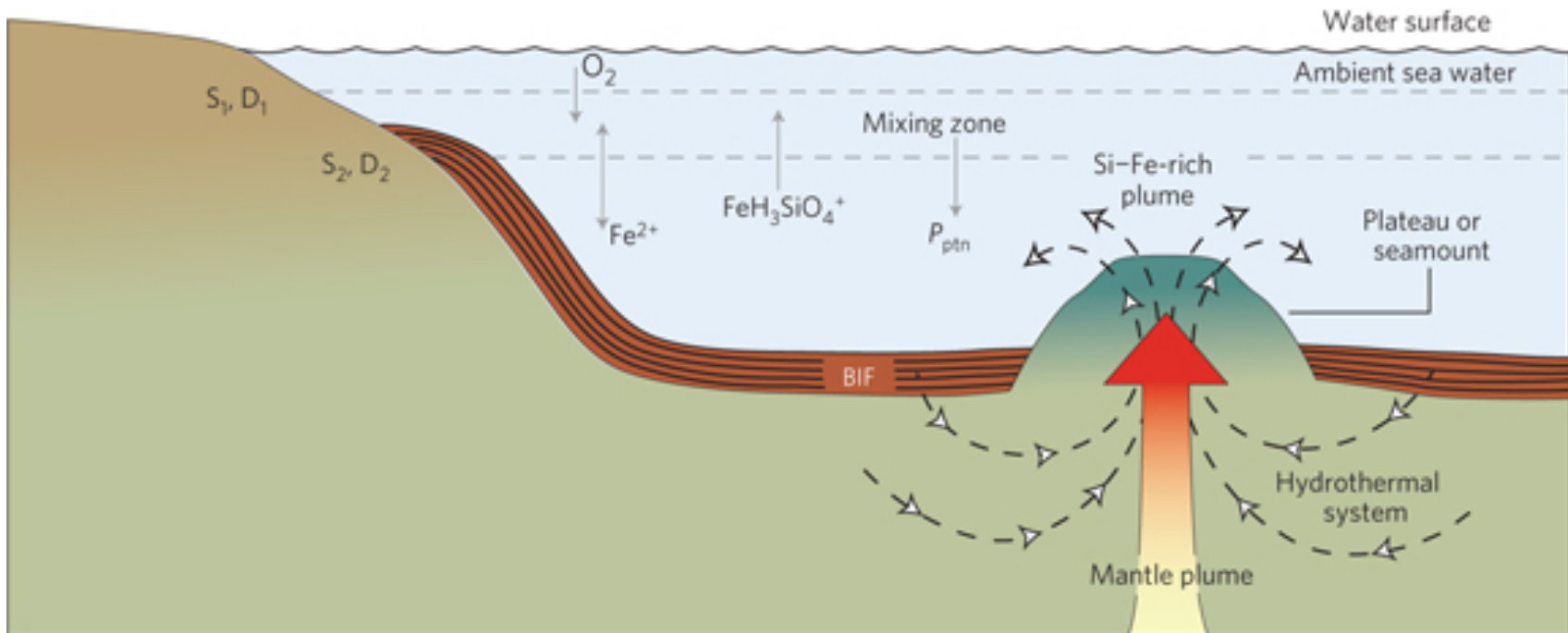


Hopefully our vans won't get crushed at the quarry!

**Thursday Evening Awards Banquet
with Keynote Address by:**

Dr. Huifang Xu
(U.W. – Madison)

**Banded iron formations: unique products from the interactions
between komatiites and seawater of the early earth**



**Friday Evening barbecue at Northland College.
Hopefully the snow will have melted by then!**



Student travel grants are available through the ILSG Eisenbrey Fund



Don't forget to bring your bathing suit to
Splashland Conference Center!



See you in Ashland !



For more information about the 2011 meeting, go to:

www.lakesuperiorgeology.org,

or contact tfitz@northland.edu